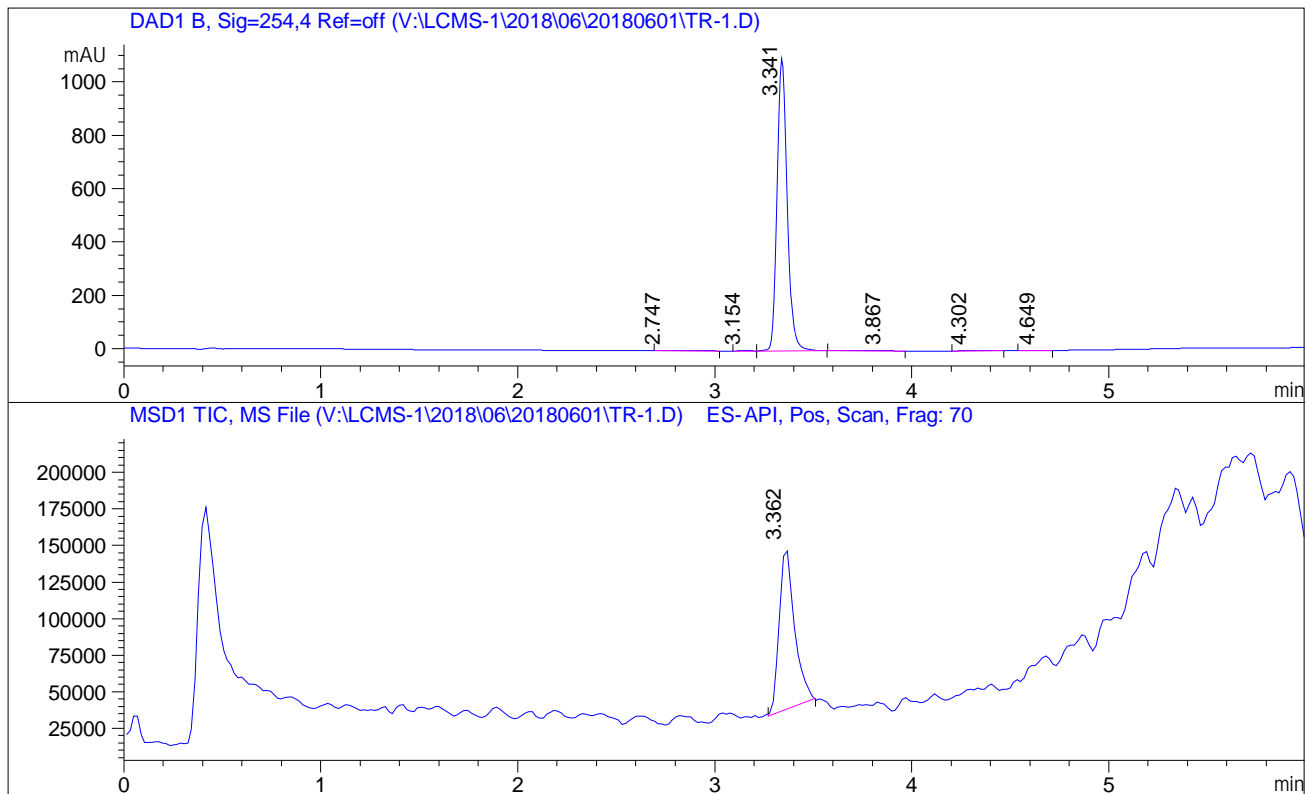


QC Report

Compound Code : TR-1
 Data File : V:\LCMS-1\2018\06\20180601\TR-1.D
 Injection Date : Fri, 1. Jun. 2018 Inj. Vol. : 1ul
 Sample Name : TR-1 Location: Sample 55
 Acq Operator : JLGAO Inj. No. : 1
 ChemStation Ver.: B.04.03

Acq. Method : D:\METHODS-201505-B-WATER\S-10-95-POS.M
 Analysis Method : C:\Chem32\1\METHODS\DEF_LC.M
 Sample Info.: Column:C18;Column size:4.6*50mm;mobile phase:B(ACN),A(0.1% TFA in water);gradient B%as Acq.Method above

Instrument Info: Agilent 1260 HPLC and 6120 MSD



=====
 Integration Results
 =====

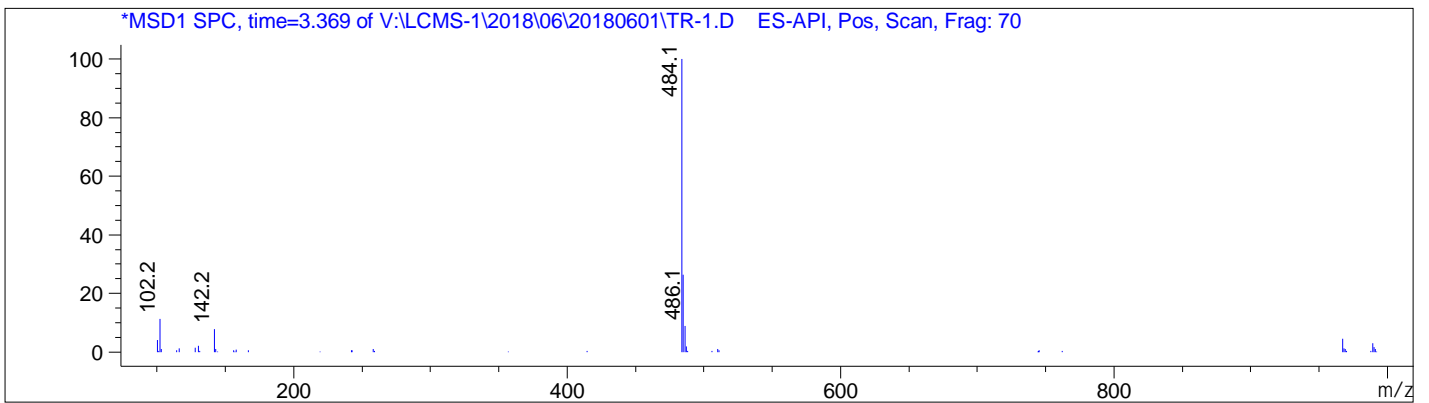
Signal 1: DAD1 B, Sig=254,4 Ref=off

#	R.T.	Type	Height	Height%	Width	Area	Area %
1	2.747	MM	0.834	0.076	0.164	8.200	0.205
2	3.154	BB	1.789	0.162	0.051	5.715	0.143

#	R.T.	Type	Height	Height%	Width	Area	Area %
3	3.341	BB	1096.540	99.575	0.056	3975.627	99.185
4	3.867	MM	0.646	0.059	0.222	8.602	0.215
5	4.302	MM	0.745	0.068	0.113	5.042	0.126
6	4.649	MM	0.661	0.060	0.129	5.122	0.128

Signal 2: MSD1 TIC, MS File

#	R.T.	Type	Height	Height%	Width	Area	Area %
1	3.362	MM	111743.281	100.000	0.089	598494.750	100.000



*** End of Report ***